

*Dementia and devolution:
A once-in-a-generation chance
for change?*

**Jen Hartley-Bond, Stakeholder Relations
Manager (Central)
Alzheimer's Society**

What is devolution?

"The transfer or delegation of power to a lower level, especially by central government to local or regional administration."

Why does devolution matter to us?

People affected by dementia stand to gain much from having truly integrated health and social care services. Devolution gives an opportunity for this meaningful integration of budgets to be implemented locally

More broadly, devolving powers is an opportunity to overcome variance in care and provision within a geographic area.



Where is devolution agreed?

Work is furthest ahead in the 10 local authorities that make up Greater Manchester

Sheffield, the North East and Tees Valley have agreed deals in last few months and last week Liverpool and West Midlands deals were also announced.

Across the country, negotiations with the government are still underway



Where is devolution agreed?

Other deals include Cornwall where 'the government has agreed to work with partners to transfer local health and social care services'

Devolved powers in Wales, Scotland, NI and London have long been in place

Each devolution deal varies – not all will include Health and Social Care powers.



‘ Devo Manc’ – The Greater Manchester deal

Historical devolution settlement for Greater Manchester agreed with the Chancellor in late 2014/early 2015.



- Builds on the work of the Greater Manchester Combined Authority (GMCA) established in 2011
- Focused on economic growth
- Will give greater powers to the combined authority working in partnership with a directly-elected Mayor.

New powers for Greater Manchester



These include:

Responsibility for a devolved transport budget

Powers over strategic planning and control of a new £300 million Housing Investment Fund.

Take on the role currently covered by the Police and Crime Commissioner.

Responsibility for devolved business support budgets

Control of the Apprenticeship Grant and power to reshape and re-structure the Further Education (FE) provision within Greater Manchester.

Opportunity to be a joint commissioner with Department for Work and Pensions (DWP) for the next phase of the Work Programme.

And last but not least...

GMCA and Greater Manchester Clinical Commissioning Groups will be invited to develop a business plan for the integration of health and social care across Greater Manchester, based on control of existing health and social care budgets.

WHAT DOES IT MEAN?



Dementia United

One of the early implementation priorities set out by AGMA (Association of Greater Manchester Authorities) and the Greater Manchester CCGs , the pilot will:

“Establish a development and implementation plan for integrated services to improve the quality of care for people with dementia across GM.

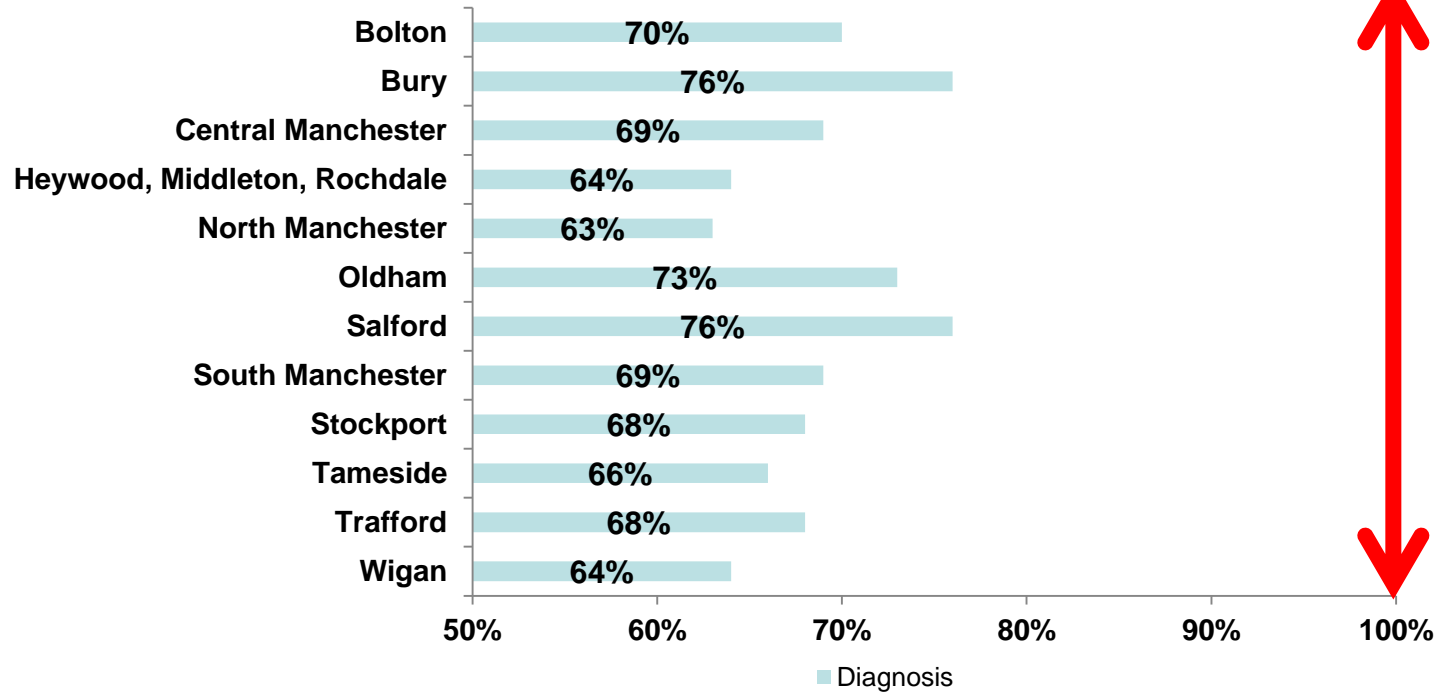
“This will feature a Salford led pilot of a whole system change for people with dementia and an agreed plan to translate innovation from the pilot into mainstream practice to improve the lives of people with dementia and their carers at scale across the whole of GM over the next five years.”

Dementia United

- Led by David Dalton, Salford Royal NHS
- Alzheimer's Society working in collaboration on this huge transformation programme
- 5 year strategy to formally launch in March 2016, which will seek 'to make Greater Manchester the best place in the world to live with dementia'.
- Visit dementiaunited.net for more information



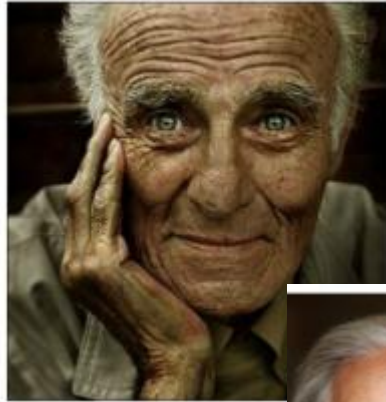
Diagnosis Rates in GM



Variation +++

75% reliability (at best)

1 in 4 missed



Opportunities

- Priorities set across an entire region
- Working across a larger geographical footprint and building new relationships
- Setting a blueprint for transforming services across the country



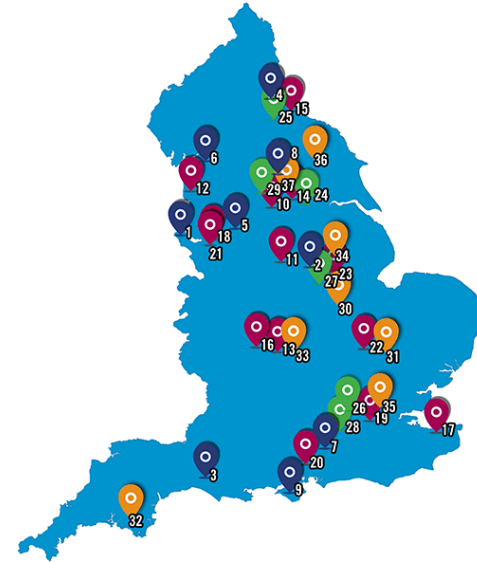
Challenges

- No extra funding
- Context of financial climate and local authorities managing cuts
- Higher impact for organisations that are not commissioned



Vanguard Sites

- New ways of working – supported by NHSF
- 40+ sites across England:
 - primary and acute care systems
 - multi-specialty community providers
 - enhanced health in care homes
 - urgent and emergency care
- Important part of integration agenda – working alongside devolution to transform health and social care



Thank You

Jen Hartley-Bond

Stakeholder Relations Manager (Central)

Alzheimer's Society

Jen.Hartley-Bond@alzheimers.org.uk