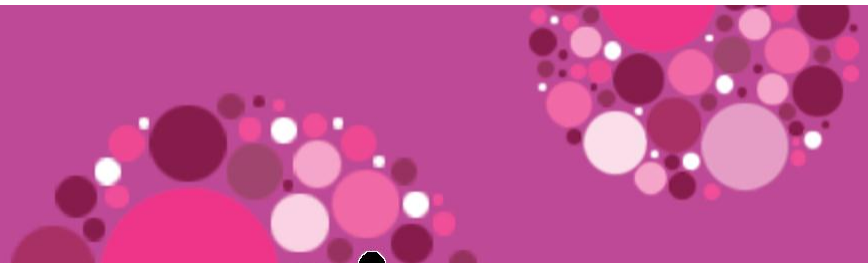
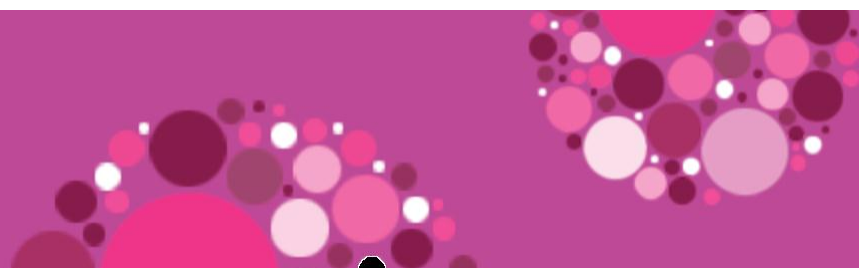
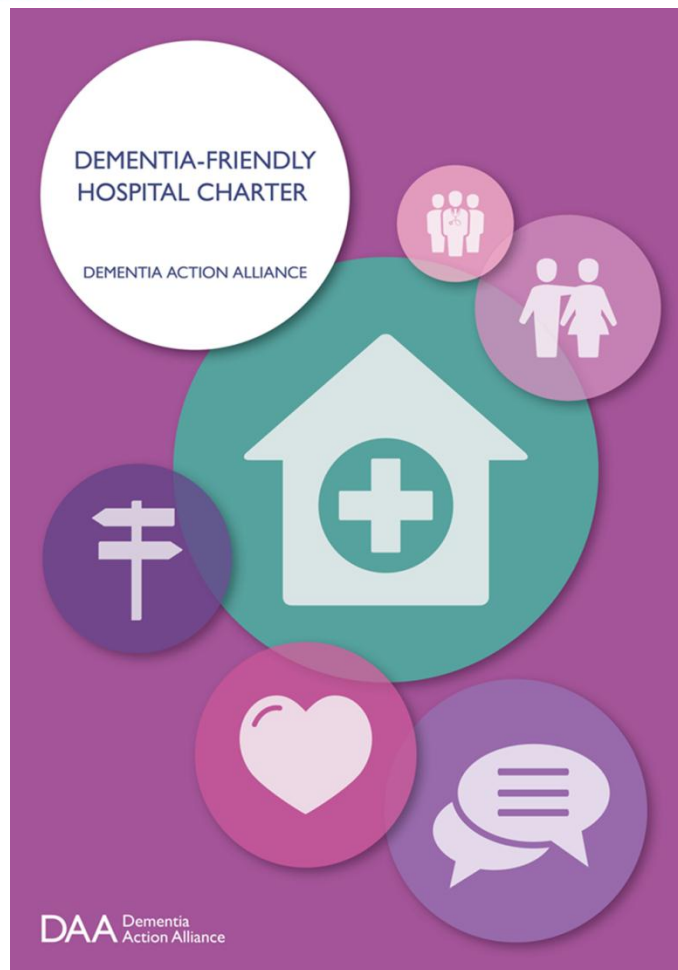


# Dementia Friendly Hospitals

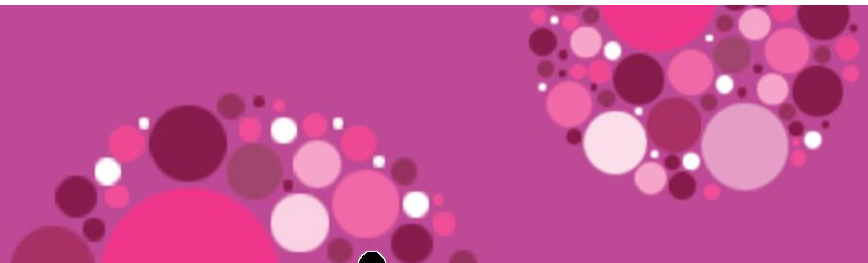
Kelly Kaye – Partnership Manager





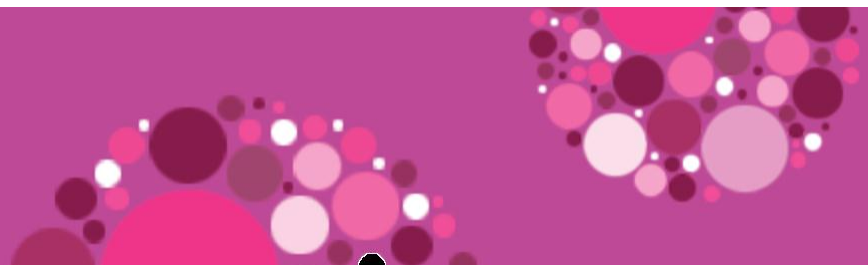
# Aim

- In October 2012 the Dementia Action Alliance launched the Right Care: a call to action to create dementia-friendly hospitals. All acute trusts in England were asked to make a public commitment to becoming dementia-friendly. 164 acute and non-acute trusts made that commitment with 88 submitting Action Plans and joining the Dementia Action Alliance (DAA).
- The Charter is the second phase of the Right Care initiative. It provides high level principles of what a dementia-friendly hospital should look like and recommended actions that hospitals can take to fulfil them. In the Prime Minister's challenge on dementia 2020, one of the key aspirations is to create dementia friendly hospitals.



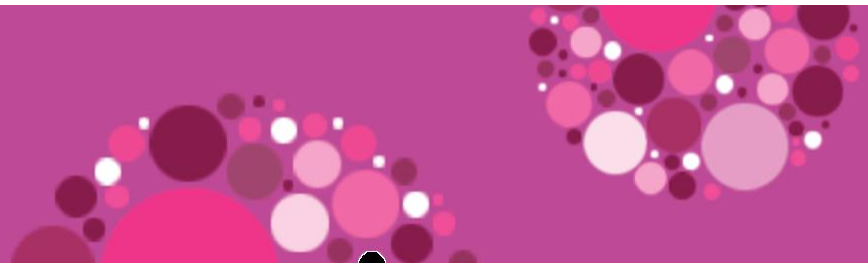
# Sign up process

- Emails sent to Chief Executives of hospitals in England
- Contact made with hospital dementia leads
- Target was 30 hospitals – Actual number 114



# Matching Exercise

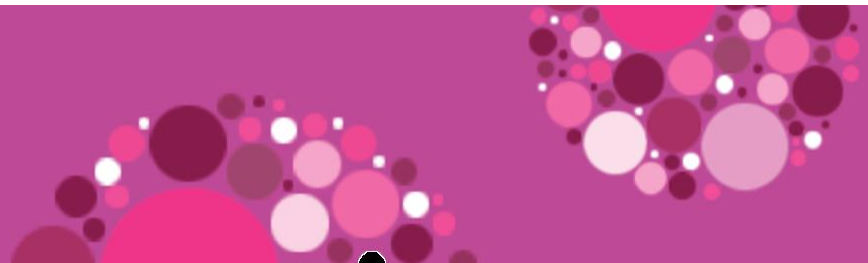
- Developing a peer to peer support network
- Connecting hospitals
- Helping to connect to look at strengths and weaknesses



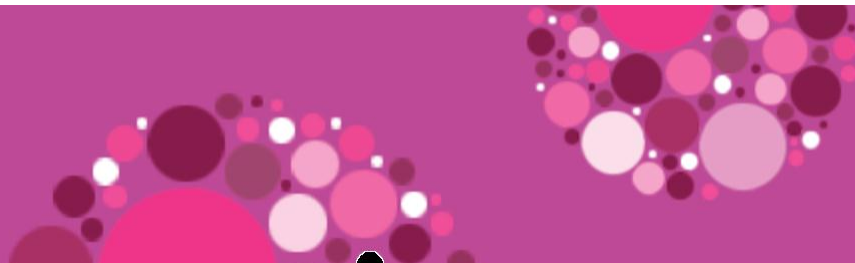
# Events

Two events based on the principles of the Charter:

1. Partnership, Assessment and Care
2. Staffing, Environment and Governance



# 24<sup>th</sup> November – Partnership & Care



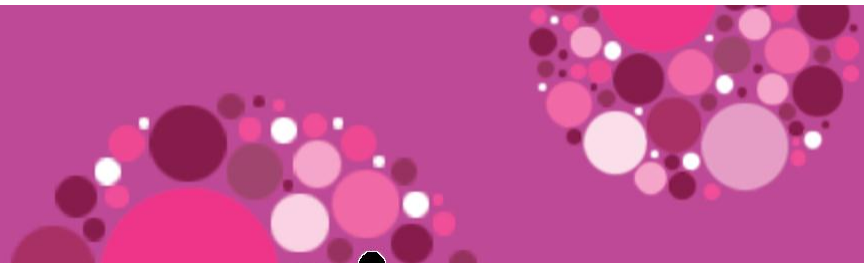
# Event Feedback

- 40% very likely, 60% likely to make positive changes
- 80% feel more optimistic about implementing the Charter

Professional,  
yet relaxed,  
very informative,  
well run

It was a great  
chance to  
network and  
hear positive  
work going on

Engaging and  
practical  
speakers, I made  
some fantastic  
contacts





# Sustainability

- DAA will be funding for the first year, but resources are limited and to ensure that the level of support continues, we will be looking for funding
- The structure is in place for this year. Next year, will ask for contributions to make it sustainable

