

# Enhancing the Healing Environment for Patients with Dementia



**“Yorkshire Outdoors”  
21<sup>st</sup> September 2011**

*It can't be easy to be healed in a soulless  
concrete box with characterless windows  
inhospitable corridors and purely functional wards.  
The spirit needs healing as well as the body.'*



*HRH The Prince of Wales  
President of the Kings Fund*

# PROJECT AIMS

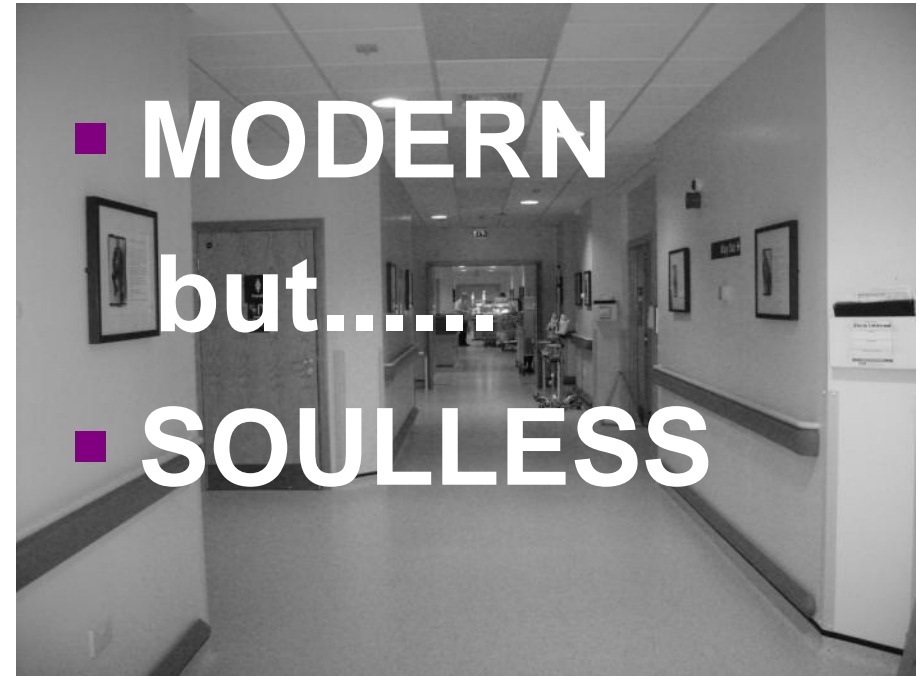
- To develop a high quality, design led project with a true feeling for what people with dementia and their families actually want and need.
- To consult with local people, patients carers, groups and charities to make sure we got this right
- To make striking physical improvements of the highest quality by the use of colour, light, art and design.
- To use colour to aid way finding and orientation in the ward environment.

# PROJECT AIMS

- To use reminiscence media including art work, digital images from the Yorkshire Film Archive and objects to personalise patients bed spaces.
- Install dynamic lighting to aid circadian rhythm's
- Create a reminiscence café for patients & their families
- To explore functional, practical ways to Enhance the Healing Environment by engaging with the patients, service users & staff.

# PROJECT LOCATION

- Orthopaedic Trauma
- Elderly Care



## HOW DID WE GET THERE?

- Consultation with Service Users, Carers & Community Groups throughout
- Chose & stuck to a theme (Yorkshire Outdoors)
- Focused on way finding, ownership of personal space & reminiscence work
- Appointed acclaimed local designer
- Partnered with Yorkshire Film Archive
- Held a photograph competition open to the public to develop a Yorkshire image library

# SOCIAL SPACE

- Projectors showing Yorkshire Film Archive footage
- Cinema style seating forming a social space for patients use
- Developed a reminiscence café for patients & carers away from the clinical area of the ward



# YORKSHIRE FILM ARCHIVE





# USE OF COLOUR

- Produced sample colour boards for patients, visitors & staff to select colourways
- With the guidance of a colour consultant appropriate colours for use with older people were selected.
- Mood boards produced to:-
  - Demonstrate visual zoning via colour
  - Highlight specific areas e.g. toilets
  - Use colour to assist way finding

# BED BAYS

- Bed bays colour coded
- Personal memory display boxes at each bed



# ARTWORK & SIGNAGE

- Dementia friendly signage
- Sustainable, seasonal, changeable media.
- Simply refreshed images
- Develop library of images & objects that reflect Bradford's multicultural society



# ARTWORK DESIGN FEATURES

- Slide frame wall artwork
- 35mm 'Kodak' slide light boxes



# REMINISCENCE

- Encourage use of reminiscence
- Aid communication & stimulation through:-
  - AV installations
  - Reminiscence objects
  - Volunteers engaging in reminiscence sessions on the wards



# SUSTAINABILITY

- Engage patients, visitors & staff in ownership of images & objects
- Use of ward donations to maintain image & object library & allocate funds from annual ward budget
- Future project plan evaluating ritualistic nursing care to release time to embrace the project
- Maintain support of “The Friends of BRI”

# OUTCOMES

- Provide innovative positive experience & increased confidence for all
- Accidents & incidents of challenging behaviours reduced by redesign & refurbishment



# WARD 23



**APRIL 2011**



**AUGUST 2011**



# A BALANCING ACT

- Provide a dementia friendly environment with dignified comfortable spaces
- Heighten awareness of Dementia in a positive way
- Become an exemplar for future Trust projects

